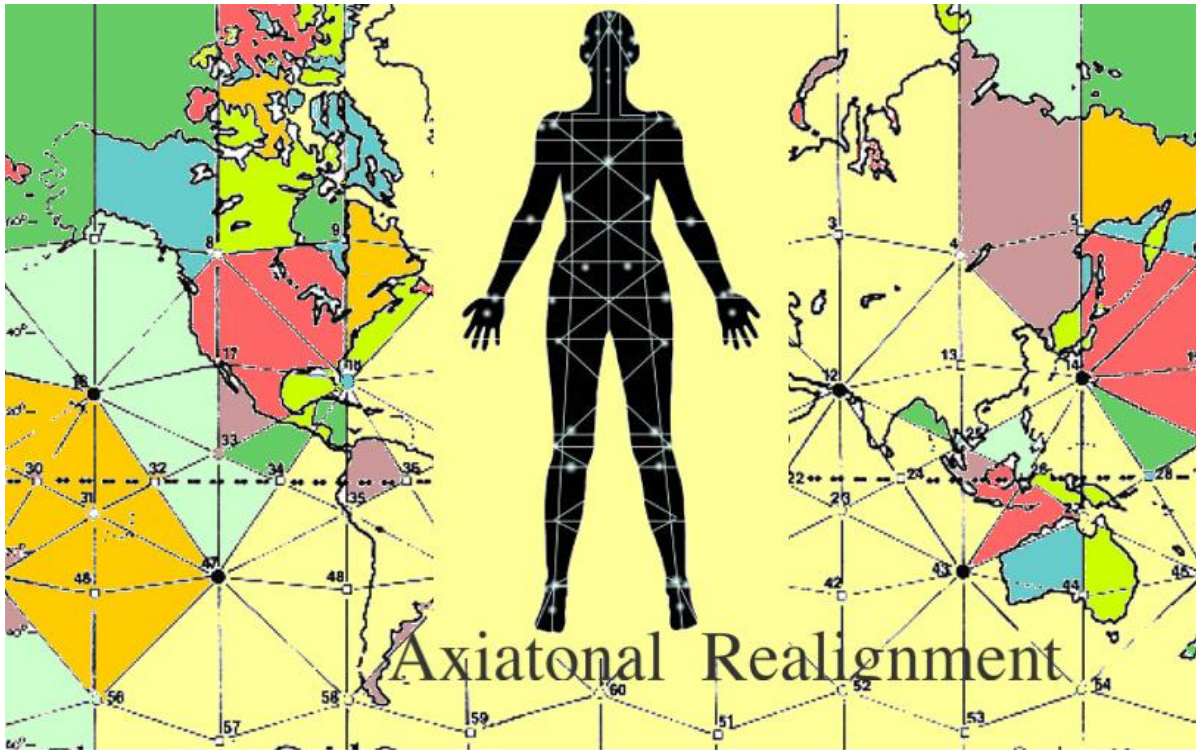




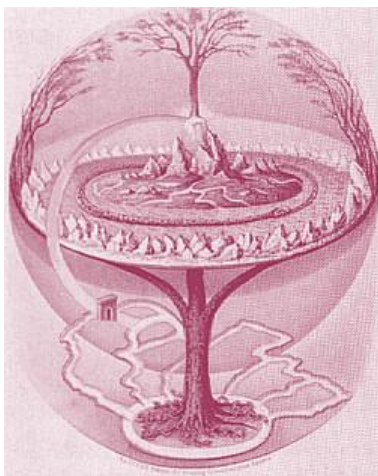
THE AXIS COELI – AXIS MUNDI ATTUNEMENTS



*The heavens declare the glory of God;
the skies proclaim the work of his hands.
Day after day they pour forth speech;
night after night they reveal knowledge.
They have no speech, they use no words;
no sound is heard from them.*

*Yet their voice goes out into all the earth,
their words to the ends of the world.
In the heavens God has pitched a tent for the sun.
It is like a bridegroom coming out of his chamber,
like a champion rejoicing to run his course.
It rises at one end of the heavens
and makes its circuit to the other;
nothing is deprived of its warmth.*

~Psalm 19



WHAT ARE AXIS MUNDI AND AXIS COELI ATTUNEMENTS?

The Axis Mundi, or The Lesser Heavenly Cycle, and Axis Coeli, or The Microcosmic Orbit, are ubiquitous symbols¹ that represent cycles of energy of rebirth and restoration and that cross diverse human cultures.

The image expresses a point of connection between sky and earth where the four compass directions meet. At this point, travel and correspondence is made between higher and lower realms of planes of reality and human beings.

Communication from lower realms may ascend to higher ones and blessings from higher realms may descend to lower ones and be disseminated to all. The spot functions as the omphalos, or navel: the world's point of beginning. This is the point

¹ They have also been referred to as the cosmic axis, world axis, world pillar, columna ceruloi, and center of the world

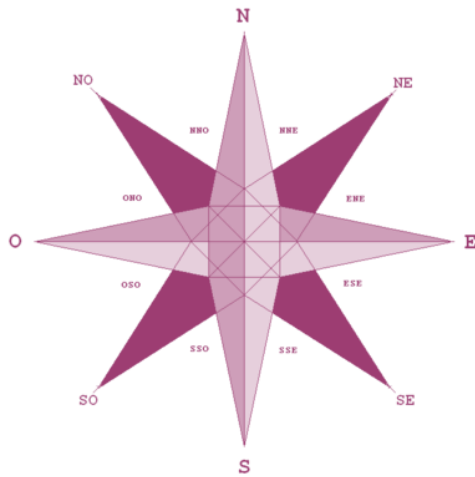
where we find our anchor point in this incarnation, our cord that attaches us with all manifestations of life.

The symbol originates in a natural and universal psychological perception: that the spot one occupies stands at “the center of the world”. This space serves as a microcosm of order because it is known and settled. Outside the boundaries of the microcosm lay foreign realms that, because they are unfamiliar or may not be well ordered, represent chaos, suffering and pain.

The Axis Mundi / Axis Coeli images appear in every region of the world and can take many forms. The image is both feminine, such as umbilical cord providing nourishment, and masculine, such as a phallus providing insemination into a uterus. It may have the form of a natural object, such as a mountain, a tree, a vine, a stalk, a column of smoke or fire; or a product of human manufacture, such as a staff, a tower, a ladder, a staircase, a maypole, a cross, a steeple, a rope, a totem pole, a pillar, or a spire. Its proximity to heaven may carry implications that are chiefly religious, such as a pagoda, temple mount, church; or secular, such as an obelisk, minaret, lighthouse, rocket, or a skyscraper.

The image appears in religious and secular contexts. The Axis Mundi symbol may be found in cultures utilizing shamanic practices or animist belief systems, in major world religions, and in technologically advanced "urban centers."

"Every Microcosm, every inhabited region, has a Center; that is to say, a place that is sacred above all."



AXIATONAL ALIGNMENT AND THE FOUR ROYAL STARS

"I beheld another splendor, and the stars of heaven. I observed that he called them all by their respective names..."

I inquired of the angel, and he explained to me secret things, what their names were. He answered; a similitude of those has the Lord of spirits shown thee. They are the names of the righteous who dwell upon the earth², and who believe in the name of the Lord of spirits forever and ever."

~ Enoch³ 43:1-2

² Using the key of star naming, we can infer that those seven stars are most likely named for the seven principal angels, all of whom at some time have lived or will live on the earth. Enoch also notes that four of those seven angels are the most important; they are called the "presiding angels."

³ The Prophet Enoch had a vision of the throne of the Lord of Spirits. He saw that there were four angels, one on each of the four sides, each praising and blessing the Lord of Spirits. He also beheld myriads of other people (Enoch 40:1-7).

The four Royal Stars, also known as the Guardians of the Sky, were a group of stars noticed by the Persian astrologers, and mentioned by Zarathustra, around 3000 BC and used as a rudimentary season calendar.

All four stars are among the brightest 25 stars in the sky, having an apparent magnitude of less than 1.5. However, this particular set of stars was chosen because they are divided on the sky by approximately 6 hours apart in right ascension. The reason why they are called "royal" is that they appear to stand aside from the other stars in the sky. Throughout the year, each star is for several months "dominant" in the night sky and one can guess the season just by noticing which star is dominant.

The four stars with their modern and ancient Persian names were:

- Aldebaran (Tascheter) - vernal equinox (*Watcher of the East*)
- Regulus (Venant) - summer solstice (*Watcher of the South*)
- Antares (Satevis) - autumnal equinox (*Watcher of the West*)
- Fomalhaut (Haftorang) - winter solstice (*Watcher of the North*)

In the early stellar cults, there were four Royal Stars, also known as "lords", were also referred to as the Watchers⁴. Each one of

This vision was very similar to that of John in the Book of Revelation, who saw beasts on the four sides of the throne which were like a lion, a calf, a man, and a flying eagle (Rev. 4:7). The angel tells Enoch not only the names of these four presiding angels, but also their responsibilities.

⁴ The four celestial beings are precisely this - they are the protectors of mankind and also the

these stars “ruled” over one of the four cardinal points. The star Aldebaran, when it marked the Vernal Equinox, held the position of Watcher of the East. Regulus, marking the Summer Solstice, was Watcher of the South. Antares, marking the Autumn Equinox, was the Watcher of the West. Fomalhaut, marking the Winter Solstice, was Watcher of the North. Towers⁵ were constructed, bearing the symbols of these Watchers, for the purpose of evocation. During the “rites of calling” symbolic gestures were given and the names of the Watchers were called out.

In the stellar mythos, the Watchers themselves were deities who guard the Heavens and the Earth. Their nature and “rank” was altered by the successive Lunar and Solar Cults, which replaced the Stellar Cults. Eventually the Greeks reduced them to Gods of the four winds, and the Christians made them principalities of the air. Their connection with the stars was vaguely preserved among the populace, in the concept of Angels.

Agents of Karma on Earth, whereas the Lipika are concerned with Humanity's hereafter. At the same time they are the four living creatures "who have the likeness of a man" of Ezekiel's visions, called by the translators of the Bible, "Cherubim," "Seraphim," etc.; and by the Occultists, "the winged Globes," the "Fiery Wheels," and in the Hindu Pantheon by a number of different names. All these Gandharvas, the "Sweet Songsters," the Asuras, Kinnaras, and Nagas, are the allegorical descriptions of the "four Maharajahs." Blavatsky, Secret Doctrine 1 126.

⁵ This is also where the practice of referring to the four principal archangels as The Towers came from.

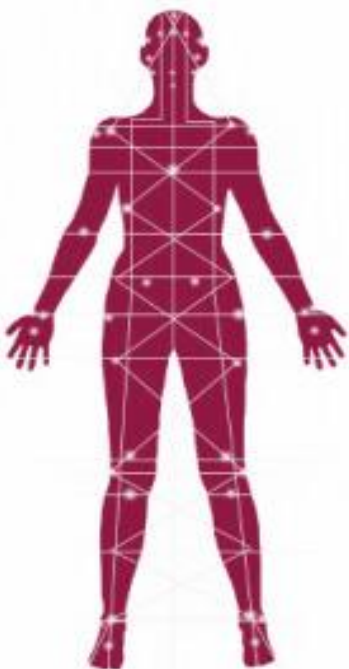
WATCHERS OF THE DIRECTIONS AND ENERGETIC FIELDS

Because we have four clearly defined seasonal events with two equinoxes and two solstices, the year is automatically divided into four. Likewise our twenty-four hour day has four quarters of sunrise, noon, sunset and midnight. This quartering of the circle is an ancient and worldwide practice. The fourfold division of time seems to lead naturally to a fourfold division of space, and the custom over ages has been to denote sunrise and spring to the east where day begins. West is sunset and autumn. North, which most cultures think of as “above” is therefore noon and summer, and south, is “below” the place of midnight and winter. The Royal Stars⁶ of Persia are so named because roughly 5,000 years ago, during the fabled pyramid age of Egypt, these luminaries held tremendous influence. Endowed with almost archangelic power, these legendary stars of antiquity are Aldebaran, Regulus, Antares and Fomalhaut, and in the epoch of 5,000 years ago they were considered to be guardians of

⁶ The four Maharajahs (the Lords of Karma) and are the focal points for karmic influence in connection with man. The four Maharajahs are the dispensers of karma to the Heavenly Men, and thus to the cells, centers, and organs of His body necessarily; but the whole system works through graded representatives. Bailey, Treatise of the Cosmic Fire 468.

They preside over the attractive forces, and distribute them justly. They enter, pass to the center of the sphere and there (if I may so express it) locate, and set up the "Holy Temple of Divine Justice," sending out to the four quarters of the circle the four Maharajahs, their representatives. Bailey, Treatise of the Cosmic Fire 1183.

the four corners of heaven and watchers of the directions, forming a heavenly cross near the ecliptic.



THE AXIATONAL INITIATION AND ATTUNEMENT

There are two distinct phases for the complete Axiatonal Initiation and Attunement. The first is the Axis Mundi and the second is the Axis Coeli.

The Axis Mundi reconnects and activates the Subpersonal Chakras, starting with the Earth Star Chakra, to the Earth. A good analogy is grounding spike driven deep into the ground.

The Axis Coeli reconnects and activates the Transpersonal Chakras, starting with the

Soul Star Chakra, with the Divine. A good analogy is a lightening rod.

The Axis Mundi and Axis Coeli are connected by way of the Hara Line, which sits one level outside and above the seven physical chakras and forms a line from the Soul Star Chakra to the Earth Star Chakra and is anchored to the physical body through the Tan Tien. A good analogy is the wire that connects the lightening rod to the ground spike.

The Axiatonal Initiation and Attunement is a Spiritual manifestation of Balance. While these Attunements can be done at any time, there are times when they can be done more efficiently and less energy is required by the Teaching Master to make the initial connection. This is particularly helpful when doing the Attunement for a large group of people. The Axis Mundi Attunement is most effective when done on the Equinoxes. The Axis Coeli Attunement is most effective when done on the Solstices.

Full Axiatonal Attunement and Initiation allows an individual to BE a true Column of Light between Divine Source and Mother Earth. The individual becomes one of the Threads in the building of the Planetary Antahkarana.

There are two main objectives of each Attunement. The first is the connection⁷, which allows you to build the bridge. The second is a flushing, cleansing and activation of all the meridian points in our bodies.

The Axiatonal Initiation will firstly and permanently fasten your own God Self energy into your physical body integrating

⁷ The connection is made through an Aka Chord.

the divine energy permanently into your energetic centers⁸.

Humans have a field of subtle energy around themselves which is often referred to as the Auric Field, aura or etheric body. This energy is made up of emotional, spiritual and mental particles. We also have Axiatonal lines, which are energy pathways that supply our physical bodies with vital energy.

This energy extends from the ground, into the atmosphere and out into the universe. The Axiatonal Alignments are a simple yet powerful “tune ups” of the energy system. It is a powerful healing tool that works to reconnect and realign the meridian lines of the body, to enable your energy system to function smoothly, and rejuvenates all levels of the body: physical, mental, emotional and spiritual.

This is not simply an Axiatonal repositioning as performed by other energetic healers, these are tools to anchor your life purpose into your bodies of Light, along with the Stellar Syllables of the four Royal Stars as the graphic configuration of these higher vibrations into a safe and sound energetic matrix board.

⁸ The aligning frequencies of the Axiatonal attunement naturally travel along our closed 5th dimension circuit loop, which reaches out into the universe and other star systems, all star systems are linked into a Macrocosmic Stellar balanced system. The Axiatonal Attunement is important because when a person is not fully linked, or correctly rewired, and receives just the frequencies without full integration of the Stellar Codes™, they can simply wear off or be nullified by the environment. Without the circuitry in place there is a comparison to taking a homeopathic remedy (another vibrational energy) and when the frequencies wear off another dose is needed.

Axiatonal is the term used to express the procedure of reconnecting you with the Earth's Axiatonal Lines, minimizing the harmful effects of certain lay lines and energetic grids⁹. This is an initiation and attunement recommended for those that work with channeling energy, and distant healing and remote viewing.

With the Axiatonal Initiation, your Soul will create a four foot diameter Grounding Chord that will help the development of the personal Antahkarana and the permanent building of the planetary Antahkarana. The Axiatonal Attunement will also facilitate reconnecting you with your Cosmic Self, your Star Seed dimension.

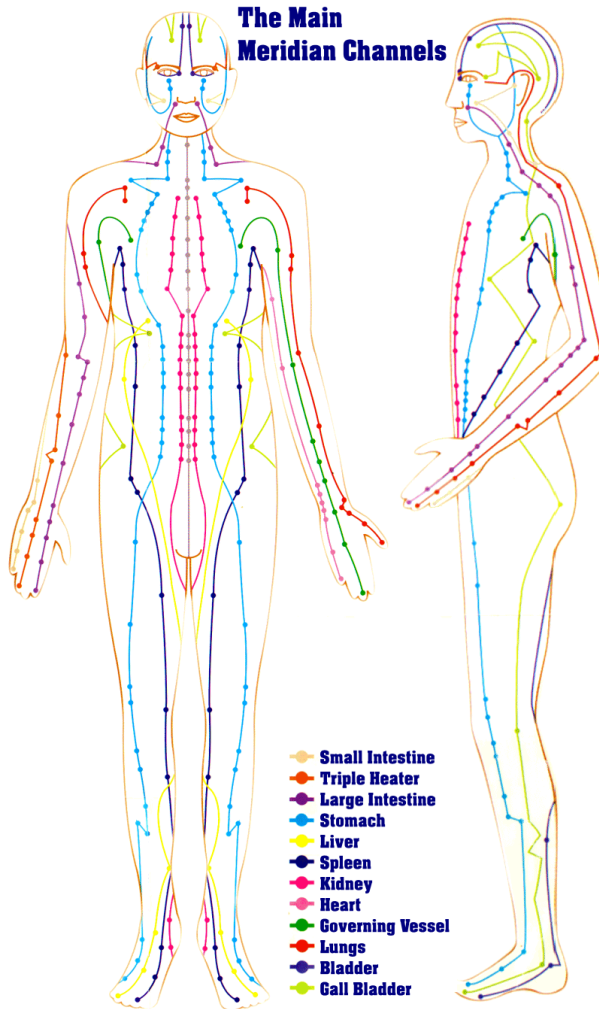
It will help to burn off and dissolve the three lower levels of consciousness formed originally by a material or physical atomic structure, what we usually regard to as below the Veils of Paroketh on the Tree of Life. It weaves a Stellar Bridge between your Solar Angel, your Christic Body (the Christ-consciousness energetic field), your Buddhaic Body, your Oversoul, your Etheric Light Body, and your "I AM" Presence (God Self) into your physical body, and fully anchors each of them permanently into your immediate reality.

It will help eradicate all Beings and/or Entities from your Crown Chakra and spiritual space. It brings you into a state of Sovereignty. All of these attributes are crucial in the process of full Spiritual Enlightenment.

The Axiatonal Attunement will make possible the anchoring of your God Self: the energies and directives of your Monad. With the constant attunement and anchoring of these new vibrations, one is

⁹ The lines which tie the magnetic domains together are axiatonal lines.

able to progressively cause the Light from the spiritual bodies, such as the etheric light body, to exude the radiant Light of Universal Grace out through the pores of the physical vehicle.



The two major steps of the attunement manifest spiritual experiences which are known as Equanimity¹⁰ which will provoke

¹⁰ Equanimity is a balance protection from the “eight worldly winds”: praise and blame, success and failure, pleasure and pain, fame and disrepute. Becoming attached to or excessively elated with success, praise, fame or pleasure can

in you the sensation of lightness and the certainty that you are more grounded and feel completely aligned with the present time, and at the same token, you will feel your need of material aspirations to decline with time.

You will notice that you will gradually become more and more emotionally detached.

WHAT TO EXPECT AFTER THIS INITIATION

Directly after this attunement, you may perceive that you may feel as you have slipped into a deep meditative state which can sometimes last anywhere from a few hours and even to several days. This very peaceful state is a period in which your physical body begins to raise its vibratory rate in order to be able to better integrate the higher frequencies of the Higher Self into the body. You may feel a need to stay by yourself and avoid too much contact with outside dissonant vibrations for a while.

When you connect deeply with your God Self, the monadic self, you tend to jump start your enlightenment process in a very efficient way; because the new soul energies help you heal old wounds, eliminate old contacts, cords and attachments- impurities of the diverse bodies as the ensoulment progresses.

This attunement gradually will assist you in the building of a new you, like a process of rebirth on a new energetic grid field, as the energy of your the monadic self, the God Self, is fully grounded in your physical body.

be a setup for suffering when the winds of life change direction.

One way of giving intent for ascension is to reinforce the axiatonal activation. While there are many people who draw the axiatonal lines, or give meditations with imagery, the key is about giving intent and involving our guides and helpers to speed up the process.

This is a route that little by little will give you the instrumental tools to become more active spiritually and emotionally detached from the areas of your life you cannot control. With time, you will develop serenity and be fearless. You will also feel that your psychic abilities¹¹ will surface more easily and naturally. It will be long lasting phenomena that will manifest new facts in your life. As the new vibrations are absorbed by your energy centers, your pineal gland is keenly activated; and therefore your level of perception will dramatically improve.

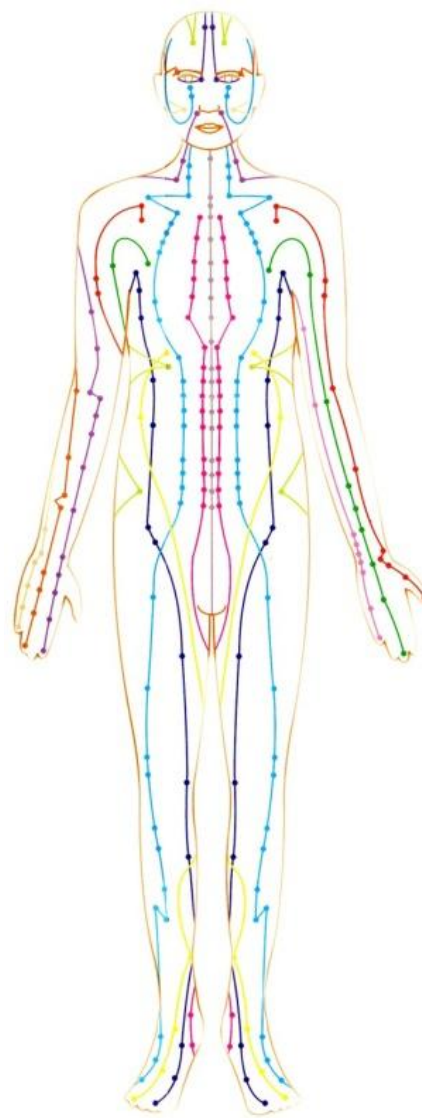
The Axiatonal Alignment is a powerful energetic upgrade, there is not any higher evolutionary programming with the exception of the full Stellar Code™ Matrix Mastery encoding. As a result; it will link us back into the Universal grid system in the Macrocosm, to receive new information for our evolution. If not, we are resorted to go back into the overall flux or magnetic flux when the system is disconnected and fragmented.

The Axiatonal Attunement also allows us to activate the DNA strands of our live energy template. It can be compared as a work of rebalancing and rewiring the bodies own electrical system with an upgraded battery and live expectancy.

¹¹ The healing frequencies activate the pineal gland, the master controller of the bodies systems, resulting in the growth of psychic abilities.

THE ETHERIC BODY TEMPLATE

The etheric body template interacts with the physical body, but its matrix is from a higher vibrational circuit of energy. In the time of the fall, when the major separation from our higher self occurred, the energetic grid of energy lines, called the axiatonal lines got somewhat disconnected and distorted from the connections with the 5D up energetic Matrix.



These axiatonal lines were conceived to feed our beings with the Divine Light coming from 5d and above, and also in counterpart it was designed the circulate the energies personified in the 4th dimensional system of acupuncture meridians.

This meridian system is responsible for the synthesis of the cosmic Prana and to redistribute it throughout the physical body and its organs.

Nowadays, this system barely cares for the minimum functions of the physical and energetic nourishment of the body.

All the diverse influx of cosmic energies that were supposed to be in circulation in all of your system of bodies could no longer be done due to the disconnection with the original grid of energies. Because of this, our mind grew to be only used to only Self references: self –will and Fear.

When we upgrade our ways to process information through the expansion of consciousness, we realize that our lower self is part of a bigger picture, just one of the many aspects of our Higher Self and your Oversoul: our Soul Self.

The reconnections with the Oversoul level functions as the gateway to re-assimilate the higher levels of Self, and also their experiences, knowledge and wisdom. This phenomenon is called “Descension of the Spirit” and it is one of the clear steps to facilitate our ascension to higher dimensions.

The intention in reconnecting is everything in this process. Understand that your Higher Self is also stuck from reaching higher levels of evolution because of the illusionary separation from its extensions and personalities. Only when we are complete we can return to wholeness.

The Steps:

1. Once long ago, we used the power of the free will to separate ourselves from the Soul and Monad source, now we shall exercise the same power to build our reconnective ladder back to source. The Antahkarana is the bridge that must be built by us through will power, intentional meditations and volition.
2. To incorporate oneself with the process of rebuilding the original energetic template and realign our energetic centers, we shall recall our Divine nature and also our sovereignty. The key for this is the unconditional acceptance of Self, and all the different levels, behaviors and attitudes. The Higher Self sees all the life experiences as beneficial learning situations and a repository of knowledge to be gathered and assimilated by the entirety of the Soul. There will never be a judgmental attitude from your Monad towards you; their vibration is always of an all inclusive compassion.

This type of perspective will shift your vision in how you relate to the thought of Oneness. Once you absorb entirely the concept of Oneness with All, there will be no energetic space for fear and disharmony to take shelter inside of your matrix space. This also helps us to realize that everything that is around us is an expression of something that we created inside.

GRID WORK

Grid Work is considered to be a highly developed Healing technique, since the results are generally a quantum leap for most of its recipients, either by enhancing their physical, emotional, psychological health or by improving dramatically the abilities to assimilate and condense higher vibrational stimuli and light into our spiritual system.

Axiatonal Integration or Axiatonal Attunement is a procedure in which the body and mind are better prepared to be acclimated to more optimum physical, psychological and spiritual levels of energy. In short, Axiatonal Integration or Axiatonal Attunement will prepare you for great positive change if you choose to take that journey. The Axiatonal Upgrade is a gift of choice, agreeing to it creates new step towards a betterment of Human Species, not everyone will make the choice to have it done. At any time, we may assume that only less than 70% humanity is in agreement about anything to be done collectively on the planet!

Once the axiatonal lines are activated, the Oversoul transmits the appropriate color/frequencies to regenerate the physical body and to integrate it into the Lightbody. At appropriate times, the Oversoul the Lightbodies descend.

PROCEDURE TO RECEIVE THE AXIATONAL ATTUNEMENT

First and foremost you must choose a quiet place and retreat from outside disturbances for a while. This is a vibrational process that will require your conscious attention.

THE SOUL MANTRA

Activate your Soul Star through the Soul Mantra¹².

I AM the Monad,

I AM the Soul,

I AM Light Divine.

I AM Love,

I AM Will,

I AM Fixed Design.

THE MANTRA FOR CONNECTION

The following mantra should be said seven times both upon going to sleep and upon waking up for the seven days following the attunement.

**KODOISH, KODOISH, KODOISH,
ADONAI TSEBAYOTH¹³**

This mantra¹⁴ creates the mental and spiritual time warp within your body which allows you to grow from a small microcosm into the next level of Godhead.

BREATHWORK

This Axiatonal Attunement is realized in two phases.

¹² Repeat three times. For more information about the Soul Star and the Transpersonal Chakras, read *Awakening the Divine Internal Stars* by Humanity Healing.

¹³ The translation of this is Holy, Holy, Holy Lord of Hosts.

¹⁴ The source of this mantra is Kabbalah.

The first is the anchoring of your Aka Cord going from the center of your heart chakra, activating the heart fires in conjunction with the meridians and other etheric structures to facilitate the alchemy of the fires of the heart into ether fire, and therefore anchoring the fire of the sacrum plexus.

The second is the flushing, cleansing and activation of all the meridian points in our bodies.

Rhythmic breathing plays an important part in this attunement, and the activation of the fires of ether inevitably changes the way we breathe, and process light information.

This transformation brings to life a new concept and potential, the prospect to breathe from your heart. The Spiritual Heart breathes through its vibrations and beats.

Your Spiritual Heart breathes naturally, while your physical heart transports the blood through the circulatory system.

It is important to know how to control and regulate the fires of the heart in order to allow the fires of the sacrum to awake develop and grow.

There is one breathing technique well known within many different schools of knowledge that is vital to foment this process. It is necessary to ignite the ether fires to purify and flush out of your Meridians, any energy that are not consistent with the higher frequencies you are about to absorb and to anchor.

Ageless Wisdom teaches that the act of respire; to breathe is intimately connected with the expansion of consciousness.

You can witness this when you see someone hyperventilating; there is often an alteration of the state of consciousness.

Hyperventilation is sometimes provoked when doing therapeutic rebirth processes and Trauma healing.

We will try to emulate at the first stage of preparation, hyperventilation based on a Pranayama exercise to allow the awakening of the Fire from the Sanctum. The second stage, we will activate and reconnect the “Triple Fire”, composed by the radiant crown of your Head, the Radiant Halo of your Heart and the Sacred Triangle.

Sri Aurobindo describes this technique as the *Breathing of the OPEN Mouth*.

The meditation and breathing with the OPEN mouth was well known by the Egyptians as the Ritual of the Opening of the Mouth to allow the passage of the Soul. We do this naturally when we come into this world and it should be the last way to breathe before we leave it¹⁵.

The axiatonal technique will assist you to breathe literally through your heart chakra.

All the Pranayama exercises you do will eventually anchor your breathing to work through your abdomen and learn how to hyperventilate with restrictions and alternate breathings.

During the time that you are activating your Soul Star, you will see that your breathing will be lighter and may even give you the impression that is almost out.

As you practice the Opening of the Mouth, you should breathe in air and try through consciousness to direct the breathing into the heart and the same time you let the air out with the sound of *ahh* or *haaa*.

¹⁵ It is an interesting observation that one of the breathing techniques involved with childbirth utilizes a similar pattern on the part of the mother.

The breathing pattern should be of a light hyperventilation through the mouth very similar to the Breath of Fire breathing technique.

You may feel the vibrations echoing through your body as music of a harp, and the Harp is your own body. The fingers into the harp are from the “hands” of your activated consciousness.

Meanwhile, concentrate on your body and feel your consciousness traveling through all your energetic centers of your body. Gradually you will feel that with the consciousness centered in your heart, your breathing pattern will be matching the beatings of your physical heart.

While flushes of Consciousness travel through your centers, vortexes and meridians from your Heart Center, you are able to control what Sri Aurobindo calls *The Switch of Consciousness*, from the dual perspective, the 3d reality planes of existence, to a Unified Consciousness of the interconnected Universe in expansion.

After a while of practicing it, the fire of the heart alchemizes itself into the ether fire which will stimulate the Radiant Crown and also the Fire of the Sacrum.

Through this meditative state, you will be able to perceive the activation of the other fires through the ether fire and will clearly feel the resonance in the sacrum level. Whatever may be the perceptions acquired during this procedure, keep yourself centered in the practice, breathing through the heart and with the mouth opened just vibrating with the energies and with silence.

Some will be feeling very sensitized by this technique, and may perceive not only the fires of ether but also the fires from the sacrum region and from a point behind the

head, the point known in various traditions as the Mouth of God, or the Eye of the Warrior¹⁶, or as the Omega Point.

This breathing technique does not require much work, but will enable you to shift the limited breathing of this world to the unlimited breathing of other dimensional realities.

You may feel your body heat up; this is because the ether fires are real and controllable. You may also feel heat in your heart center. Those are essential elements to form and build your interior Temple.

You may feel extremely sleepy after this practice. Allow your body to rest because it will need time to assimilate the new influx of energies.

SYMBOLS

The symbols, or syllables, for the Axiatonal Attunement and Initiation are not required for the recipient and are part of the Teaching Master Program¹⁷.

¹⁶ The point where you allow seeing behind yourself and through this switch the consciousness and awareness from inside out and upside down.

¹⁷ This is also included as part of the Stellar Code™ Teaching Master Program.

APPENDIX OBSERVATIONS

According to ancient “lost” sources of information, there is a reason why we have continued to be in conflict over spiritual methods and religions.

These notes are just a brief overview of some observations left as clues from Ageless Wisdom schools of thought. These notes should be observed as scientific reminder, not having necessarily having anything to do with specific religious visions and perspectives.

Originally human beings were conceived to operate at a higher frequency silicate level, in a less dense “physical” biological format.

The Fall of Man threw mankind into a much denser carbon-based biology, and it had the general matrix distorted from the tilt of the earth magnetic axis, which is 23.5 degrees. This provoked a distortion in the way we receive and assimilate higher energies into our matrix template. The tilt created many repercussions; one of them being a multitude of astral realms. The beings and creatures that populate these realms are mostly thought forms transformed into “living creatures” and they are originated from our creative process: thoughts imbued with intentions. They are not necessarily Living Beings.

Originally when coming to earth, our energetic meridians, our vortex centers and brains are aligned with the electro-magnetic fields of the planet; and this influences us differently, depending on the level we interact with the Microcosmic and Macrocosmos.

For many centuries, we have invested solely in the study of the effects of the Pineal Gland, but still the practices are still influenced by the imbalances of our Earth.

The imbalance of 23.5 degrees in one way detaches us from the original true source of light. This does not mean we are prevented to connect with Source, but it has been creating more obstacles and distortions in our pursuit for enlightenment and ascension. For most of us, this makes it almost impossible to perceive reality as we were intended to do since the beginning of time.

As the result, many of us, even after finishing all what was created on the karmic journey through life times, can come back repeatedly to the wheel of incarnations, because of missing the point of “escape”.

With the Axiatonal Alignment, the configuration of your meridians will be restructured and reconnected with the Christ-consciousness, the giver of life, and gently tilted to the right side of your brain. Along with the cleansing of the Meridians, this will cause a significant increase of electrical charge inside of your system of bodies, and will facilitate your pineal gland to rotate the proper way, right back on its original center.

This process is done from the higher chakras above your head – the transpersonal chakras going downwards through a process known by the Ageless Wisdom as *Righteousness*^{18 19}.

¹⁸ These practices were once taught by the Essenes, and their Masters, including the Master known as Jesus, and a teacher role described as the Teacher of 'Righteousness', amongst others who were also guardians of this sacred information.

¹⁹ The Hebrew word for righteousness is tseh'-dek, tzedek, from Strong's Exhaustive Concordance of the Bible:6664 — righteous, integrity, equity, justice, straightness. The root of tseh'-dek is tsaw-dak', Strong's

These adjustments require specific meditation practices that directly address the imbalance currently pulling the brain off balance to the “left”. It is a *dark* force of “dead or static light”, which is also described as *reflected* light, i.e. it is not the actual source of the light. If you want to understand more about how the Static Light has been influencing us, please reflect upon the Allegory of the Cave by Plato.

The replicate “Way” is the mirror reversal of the real thing, yet everything that goes into the “mirror” stays there, constantly replaying because it cannot escape. The “magnetic mirror” is “trapped light”. A great many of our masters and gurus, even from the most lengthy of ancient lineages, are masters of the *reflected* light simply because logic and spiritual logic automatically dictates that the “balance” is in the “center”. But the center can only be determined by electromagnetic positive/negative currents flowing in alignment with a solar, then galactic, then universal center. If that central alignment is broken off, if our Axis Mundi / Axis Coeli is damaged and distorted, all the efforts directed to a collective ascension can be deceiving and unfruitful.

The Axis Mundi and Axis Coeli, as we discussed before, is a representation and alignment of our tree of life. The only way to reestablish connection with the Divine is to work on oneself to shift the receiving of light

Concordance:6663 — upright, just, straight, innocent, true, sincere. It is best understood as the product of upright, moral action in accordance with some form of divine plan.

In the Book of Job the title character is introduced to us as a person who is "perfect" in righteousness. This does not mean that he is sinless. "Perfect" in this sense means that his righteousness permeates every relationship of his life as his working principle.

from static light to the “living light” of Christ-consciousness.

To avoid being wronged or deceived by any system, which includes the many that genuinely did not know about the error of the planetary alignment and axiatonal lines related to it, your meditation practice must address the “right side” correction of the rotated pineal, in order to escape the Wheel of Rebirth, and raise yourself or ascend enough to escape the Wheel.

This is the ancient knowledge that came from many Masters through time; It was the Science of Galactic and Universal Alignment Physics, not specifically a religious work.