

Stellar Code™

Spica Guidebook
& Empowerment
Codes



STELLAR CODE™

SPICA ATTUNEMENT

-Appendix



INTRODUCTION

As we enter in the Realm of the Stellar Code Spica, we cross the first threshold from

where we consciously start operating and working in multi-dimensional levels. As we journey through the various attunements and archetypal initiations, we reach a greater understanding of our higher self and the purpose of experiencing incarnation in this time on earth. The attunements of the series of the Stellar Codes™ are the substrata that allow the Individual to consciously retain these Stellar Empowerments and translate them to the needs and demands of their daily life.

The stage enacted through the attunements of the Spica Codes allow the seeker to receive and change for the transformative stage of spiritual chrysalis to bring to birth the awakening of the Christ Consciousness within the seeker.

The Attunements are the facilitation frequencies that are transferred from the teacher to the student to smooth the progress of the opening of new channels inside one's body allowing them to transmit further these new frequencies, once they are enabled to capture the energy and ground it in their new open channel points.

The Attunements of the Stellar Code™ are not arcane formulas performed by the Teacher that somehow magically attune the student. With each Empowerment, the Teacher simply acts as an initial “bridge” for the student to connect with the energy to be



transmitted. Through this connection, the student creates their own conduit, or Thread. The three Empowerments of the Spica Attunement produce three individual Threads, which weave themselves into a Strand. Visualize this as three individual optical fibers merging and becoming one larger diameter fiber optic cable. The difference is that the Light flowing through the new Strand is not three times the Light flowing in each Thread – it is the Light flowing cubed!¹

All Dispensations of Grace require an Act of Faith by the parties involved. Both Teacher and Student acting as one conduit of energy are able to integrate, or weave, the vibrational Strand and receive the Dispensation of the Attunement by the Divine Grace in action.

The Performance of the Attunement procedure is an Act of Intention and Faith by the Teacher. The Receiving of the Attunement is an Act of Intention and Faith by the Student.

The Stellar Code wisdom is a primordial bridge among the superior dimensions. The laws of harmony that reign are part of this

Spiritual science; and that gives us the hope to know that we are not abandoned or isolated in this world, with no perspective to progress, we are all in the path of re-awakening. As you unify your higher self with your higher heart in all your multi-dimensionality, you recognize a distinction and change in your frequencies. The change in frequency level is the beginning of your real awakening work, because Light is your true nature and the underlined base of all creation. The divine light emanates without restrictions, and nurtures every single being in the great scheme of this Universe.

The Stellar Codes allow us to receive the pure emanation of light, which is continuous and indistinct, non-judgemental and permits us to use it to build new elements in your life that can impact the lives of others you come in contact with. The possibilities are infinite as we grow and perceive the multitude of worlds that start to develop inside of the many realms of our soul: this is continuous process of discovery.

The Stellar path adds value to your life, as it adds elements to your existence that many never had the possibility to internalize living through the demands of mere existence. It is a way to discover and know yourself and your connections with the rest of the Universe. We called them Stellar Codes because they were called and regarded as such through many civilizations through time. We are the result of the human wisdom accumulated through the ages, and the Stellar Codes were always there, as silent witnesses of our passage through earthly experiences.

¹ See explanation of the vibrational signature in the Ethos Solaris



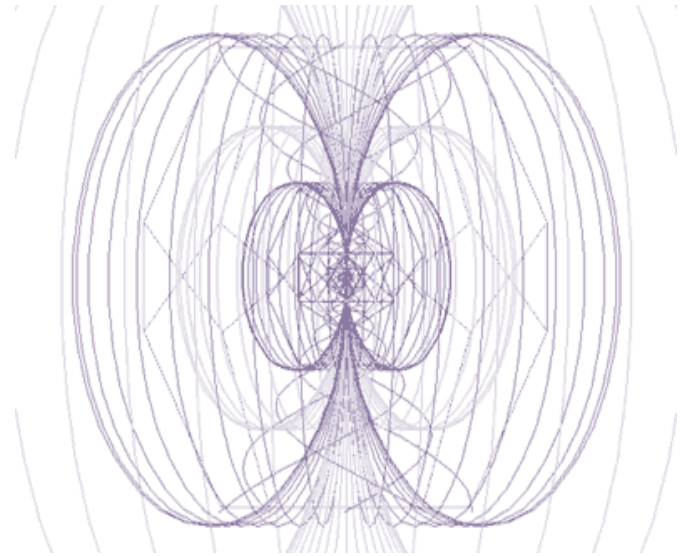
SPICA - ARCTURUS - REGULUS

These attunements are the first in the series of attunements that will be introducing you to work in three new areas of your Bodies: the development and opening of your Divine Internal stars, the increase of the light coefficient in your regular chakras and the introduction to working on a regular basis with the Platinum Ray.

OPENING OF THE INTERNAL DIVINE STARS

Many of the procedures and techniques were already discussed in the other eBook from the Stellar Code™ series “The Awakening of the Internal Divine Stars”. These methods will empower the seeker to open more possibilities to the unification of personal will with the Divine will. This is an unprecedented step towards the acceptance of guidance from your soul.

As you work your way through the exercises cited on the previous eBook, you will gradually perceive a change not only on the structure of the physical chakras, but also a progressive transformation on the space between them. The continuous training and clearing are necessary stages to open and dilatation of the space of the Central column (the Antahkarana), but with consistent work, the space between them will naturally tend to collapse on what we call “the Unified Field of Light.”

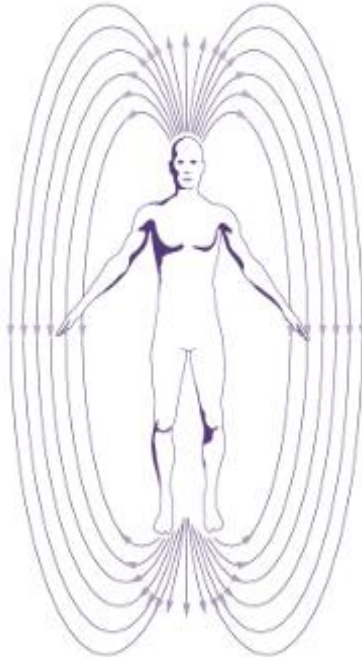


THE INCREASE OF THE COEFFICIENT OF LIGHT

The opening of the Transpersonal and sub-personal chakras undoubtedly will increase the amount of energy circulating in your Nadis system and will enable you to use the Soul Star and the Stellar Gateway as efficient tools from the soul. The continuous exercises and practice will give you the control of the energies inside and outside of your Auric field.

With time, you will find that your consciousness field of reality and understanding will also expand and your multi-dimensional nature will be more prevalent in your daily dwellings.

THE COLLAPSING SPACE BETWEEN



We will describe a valuable technique especially for those that have been practicing meditation and it is, in one way or another, mastering a level of Selfless service to others (Bodhisattva level).

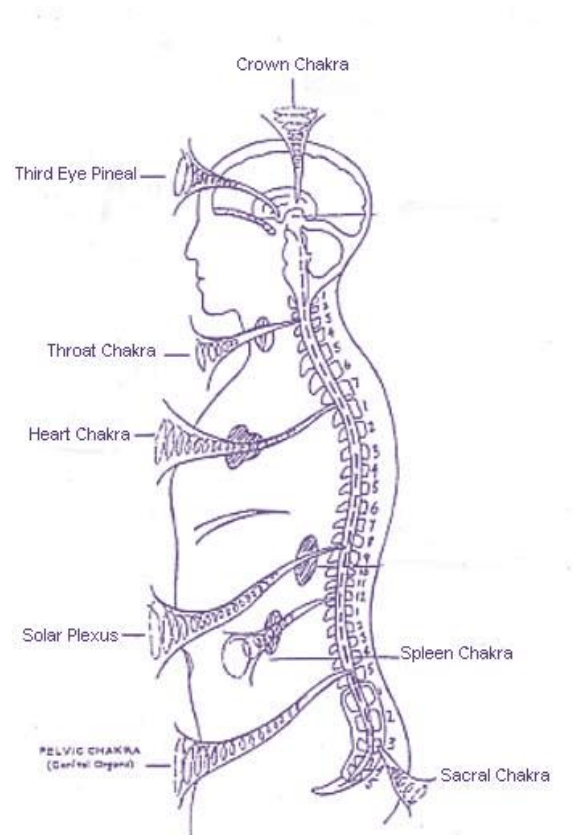
The *space between* is the region of domain that sits between the chakras, between the subtle bodies and etheric body, and between the subtle bodies and one's dreamtime self, or your multi-dimensional self.

What we often see is the presence of small chakras, generally circulating as cones of light², disposed in a upright position, which many times are even greatly dislocated from their original position due to the amount of Karmic and psychic residues inside of the central channel. Also, it is easily observed in

² These are referred to as lotus flowers.

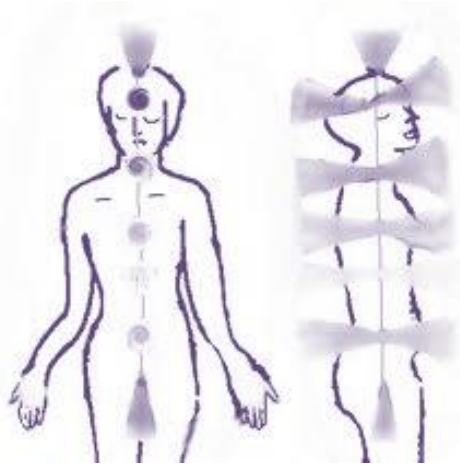
most of the seekers, the space between the original physical chakras.

This emptiness of the space creates a fragile structural field that shakes and vibrates easily, therefore creating vulnerability to the seeker when dealing with daily lives and challenges.



Some schools of wisdom believe that the space between the chakras can actually hide unstable and harmful³ energies that do not help us when we are trying to develop our full potential as human Beings.

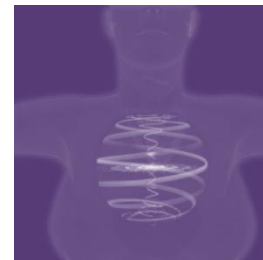
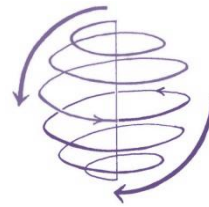
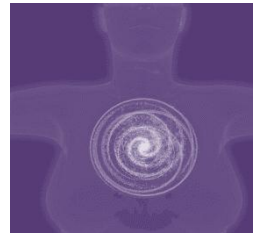
³ These include thought forms and energy attachments.



As it happens with the development of the Sutrama, evolving to the stage of Antahkarana, we should envision the development and shift of our chakras, from the upright, and often dislocated spot, to a position where they can be begin to rotate upwards creating a vertical column of light. During this transformational process, the Heart Chakra is the key. Once the Heart Chakra begins to rotate, the other will follow naturally creating a beautiful column of light.



Using intention, calibrate your chakras up so that the chakras and subtle bodies will near be touching each other and inflate the lotuses⁴, if you have them open, to the edges of the subtle bodies. This will create a stronger field that will facilitate the regulation of the energies inside of the bodies and will assist ascension and healing exercises to be performed with greater ease.



We must observe that, if during the exercises proposed here, you start to feel tired, please know that this is probably because there is not enough Chi energy running into your system. If there is not enough Chi, the kundalini system will slow down and make the chakra arrangement to subside in size leading to small chakras with large gaps in between.

⁴ Lotus is one of the names given to the chakras when fully functional and attuned.



In such moments, take four or five deep breaths and exhale slowly while being determined to call back all the lost Chi. Another useful technique is to practice Pranayama breathing, as this will quickly revitalize the energy centers and circulate the Chi back into the system.

Intend consciously to expand your chakras as you meditate. Continue slowly to diminish the space between them and intend them to eventually touch each other. As you insert this practical technique in your daily meditations, allow their original rotation to be filled with light and you will certainly feel much better physically, mentally and emotionally.

If you perceive during these meditations that one of the chakras is still draining the entire Chi away, stop and clear that chakra: clean it out of all debris, psychic, karmic, and emotional. Try to do this without the need to sleep before the clearing.

INTENTIONS TO REDUCE *THE SPACE BETWEEN*

WORKING WITH GRADUAL COEFFICIENTS OF ENERGY AND LIGHT

Before starting this Spiritual work-conscious re-patterning and meditation, you should meditate to activate your Soul Star⁵. Evoke the presence of your I AM Presence to oversee and assist with this expansion. When ready, evoke and invite the presence of the Planetary and Cosmic Consciousness to be present at this meditation. Take three

⁵ Use the Soul Mantra already given in previous materials.

deep breaths and evoke the Axitonal Planetary and Cosmic Alignment, so every single step will be done in accordance to the expanded energy of evolution, not the other way around.

This is what you can call Soul Work.

STEP ONE

I, (your name), intend to collapse the **space between** to 25% of my total energy flow in the etheric body.

(breath deeply from the mouth and release from the nose)

STEP TWO

I intend to uncast any artificial device, machinery or patterning that suspends my **space between** more than 25% throughout my etheric body that is non-karmic or other creational in nature.

STEP THREE

I further intend to release all karmic debris, patterning or thought-form that causes portions of my etheric body to host **space between** greater than 25% in size.

STEP FOUR

I intend to collapse the **space between** to 25% between my etheric skin or genetic grid work and ascension grid work.

STEP FIVE

I intend to uncast any machinery or patterning that is non-karmic and suspends my **space between** more than 25% between my etheric skin or genetic grid work and ascension grid work.

STEP SIX

I further intend to release all karma, patterning or thought-form that causes portions of the **space between** my etheric

skin or genetic grid work and ascension grid work to exceed 25% in size.

STEP SEVEN

I intend to collapse the **space between** to 25% between my small, medium and large chakras.

STEP EIGHT

I intend to uncast any machinery or patterning that is non-karmic and suspends my **space between** more than 25% between all my physical chakras.

STEP NINE

I further intend to release all karma, patterning or thought-form that causes portions of the **space between** my chakras to exceed 25% in size.

STEP TEN

I intend to collapse the **space between** to 25% between genetic grid work and subtle bodies.

STEP ELEVEN

I intend to uncast any machinery or patterning that is non-karmic and suspends my **space between** more than 25% between my ascension grid work and subtle bodies.

STEP TWELVE

I further intend to release all karma, patterning or thought-form that causes portions of **the space between** my etheric ascension grid work and subtle bodies to exceed 25% in size.

STEP THIRTEEN

I intend to collapse **the space between** to 25% between the mental, emotional, intuitive and creative bodies.

STEP FOURTEEN

I intend to uncast any machinery or patterning that is non-karmic and suspends my **space between** more than 25% between my mental, emotional, intuitive and creative bodies.

STEP FIFTEEN

I further intend to release all karma, patterning or thought-form that causes portions of **the space between** my mental, emotional, intuitive or creative bodies to exceed 25% in size.

STEP SIXTEEN

I intend to collapse **the space between** to 25% between the subtle bodies and dreamtime self or light body.

STEP SEVENTEEN

I intend to uncast any machinery or patterning that is non-karmic and suspends my **space between** more than 25% between my subtle bodies and my dreamtime self.

STEP EIGHTEEN

I further intend to release all karma, patterning or thought-form that causes portions of **the space between** my subtle bodies and dreamtime self to exceed 25%

STEP NINETEEN

I intend to collapse the **space between** to 25% between the dreamtime self and my light body body-double.

STEP TWENTY

I intend to uncast any machinery or patterning that is non-karmic and suspends my **space between** more than 25% between my dreamtime self and my light body body-double.

STEP TWENTY ONE

I further intend to release all karma, patterning or thought-form that causes portions of ***the space between*** my dreamtime self and my light body body-double to exceed 25%

STEP TWENTY TWO

To complete this exercise, thank your I AM Presence and the facilitation of the helpers and healers that are working towards the greater good of all. Say a prayer to yourself, and seal this operation with the words Amen, Om Shanti Om, or And So It Is.



WORKING WITH THE PLATINUM RAY

The Platinum Ray is an energetic omnipotent beam of light that has a multidimensional resonance. It is a ray for Planetary Service. The platinum ray is an essential for the balance and expansion of the energies of ascension we are all experimenting with as a soul group on Earth now. It is a type of power which vibrates the Universal Truth that expands, permeating all the aspects of the manifested Cosmos.

The Platinum Ray unifies and operates at a very high cosmic level. It is not necessarily a warm and fuzzy ray, yet it is the pure embodiment of compassion emanating from the level of unity consciousness. By definition, the Platinum Ray detains the nurturing aspects of the feminine nature, even though it is in itself the balance stance between the polarities of the Masculine and Feminine vibrational frequencies.

The Platinum ray is a ray that expresses itself through the concept of Oneness and Unity, and the practical use of it will, with no doubt, diminish the differential space between the right and the left side of your brain. One of its many utilities and accomplishments is to create the propensity to unify the Consciousness in synchronicity with the mind in the world created and perceived as duality.

PREPARATION MEDITATION TO WORK WITH THE PLATINUM RAY

VISUALIZATION OF SPIRITUAL LOTUSES TECHNIQUE

This is a Hindu visualization based on the teachings of Lord Krishna.

With the attunement from Spica and Arcturus Stellar Codes, you will be able not only to work better and assimilate better, but also transmit more efficiently the Liquid Platinum Ray to others and reach a level of energetic stability where you can be an active part of your interactions in Dream time and Meditational time. The Platinum Liquid Ray is a gift from other star systems to aid the development of mankind and all sentient beings on earth. The amplification



of healing works with the use of this tool is unlimited.

Procedure:

Sit comfortably and activate your third eye chakra and the heart chakra. To do that, fill those chakras with white or golden light while you take deep breaths.

Imagine that in front of you there is a vase filled with water, placed at more or less 36 inches away from you. Imagine a yellow lotus (or flower) floating over the vase, and you see that this flower is not really much alive, actually being withered and devitalized.

Now, visualize this flower reaching down to the Vase, and the stem touches the water and gets reanimated and starts to flourish. Now try with your mind's eyes to see this flower completely open and alive.

Now visualize a white flower-lotus blooming from your ajna chakra (3rd eye). Try to hold this visualization for a period of time.

Now, move to the base of your neck and visualize there yet another white lotus blooming. Hold this image for a while in your mind.

Now concentrate your attention on your sacral, or umbilical, chakra and visualize a yellow flower-lotus also blooming there.

Now, without losing this image in your mind lie down and imagine the yellow lotus blooming on your second chakra. Imagine for a moment that everything that exists is in perfect harmony and balance, and that everything is made of pure light and peace. Take your time to feel through your entire body the energy of this realization.

This technique will infuse within you a deep thirst for Spiritual frequencies and will give you the will and strength to perceive the simplicity in which life organizes itself.

Every time you reach this stage of realization, sincerely wish for the good of and to relieve suffering from all beings, that all may also reach this realization and be liberated from the circle of suffering and experience ultimate peace.

The practice of this technique will enable you to reach beyond the predisposition of working with Bioenergetics and will improve your ability to syntonize with the many invisible helpers and guides that are available to truly assist us on our spiritual path towards perfection. You will now be working with the Etheric Crystal pyramids, which are permanent non-local structures in time/space that emanate the Platinum Ray and the Platinum Liquid Light limitless to all the Cosmos.



OPENING THE CHANNELS TO RECEIVE PLATINUM LIGHT

Here we describe step by step techniques in how to start channeling the Platinum light inside of your energy matrix.

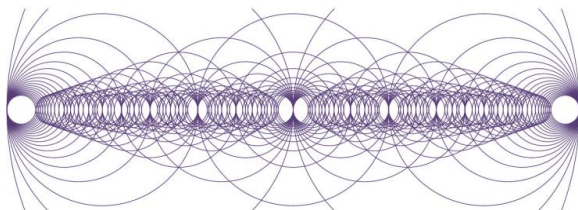
Step 1. Establish protection - Surround yourself in a bubble of golden protective Light.

Step 2. Ask for your angelic guardian and angels of protection to surround the room.

Imagine closing the 'psychic door' behind your right ear to avoid allowing any negative energies to undermine the process you are about to start.

Step 3. Call for assistance – call in the angels of the Christ Light and crystal energies, along with the archangels. Ask for your spiritual teachers and guides to join you, besides the angels and teachers that support those that are receiving the Light.

Also request support from the dolphins, elementals, trees, and nature spirits that roam the Earth if you feel compelled to do so. Ask the Lightworkers from Arcturus, Sirius, Orion, Spica, Regulus to join with you, along with the advanced beings from the diverse places of Mother Earth.



Step 4. Position the Etheric Crystal Pyramids – Ask the angels in charge of the crystal energies to position special Etheric Crystal Pyramids as necessary to support yourself and those who will receive the Platinum Ray.

Then imagine that these crystal triangular-shaped objects are in place as requested.

Step 5. Raise your consciousness – Imagine that your consciousness is raising to your Higher Self and say,

“Heavenly Father, Holy Mother God, I raise my Consciousness up to your holy consciousness that we can be one.”

Step 6. Ask for the Light – Now access the Platinum Ray and send it to your desired target, asking it to perform what you feel needs to occur. Guide it through the various energy points for you and those you placed in the circle of Light.

Repeat the following prayer (or something approximate),

“Heavenly Father, Holy Mother God, as we enter your circle of Light, love and peace, I ask in the name of our Lord Christ, that the holy Light beings in charge of the powerful Platinum Ray, along with this distinguished group of Lightworkers assisting us, now send this special Light to the following (name persons, places, things as necessary) for the purpose of (explain what needs to be done with the Light), according to all of the Platinum Ray’s special Attributes.”

“And let it release very powerfully from these great Light beings, and flow down to and through (the various energy center points for individuals, through a certain



area for places and things) the receivers of this holy Light, that they might experience the healing and rejuvenating properties of this blessed ray. Let it surround them fully and completely in a large bubble of Platinum Light.”



(For your individual use or to use in others)

“Let it enter into their mental center, passing gently through your conscious and subconscious mind, in order that you might experience a complete and total healing to your thinking processes and attitudes, and release and freedom from past karmic patterns that may still exist in your subconscious.”

“Let the Light flow to your (their) throat centers so that the words they speak are purified and truthful, and of a high vibration.”

“And as it rushes into your (their) heart center, let the Light touch into all portions of your life (their lives), especially Your (their) health, personal relationships, business activities and finances, and every other aspect of your (their) earthly activities.”

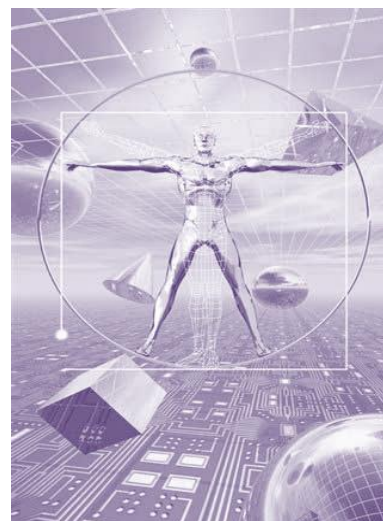
“Let it continue down into your (their) emotional centers, that their emotional feelings and reactions will be healed and freed up from the debilitating experiences you (they) have suffered in this life and every other past life in your (their) long existence as a soul being on this planet and others.”

“ Let this ray also protect and seal your (their) emotional body that it might be spared from damaging thought forms and feelings that could put it out of balance.”

Step 7. Visualize the process – As you send the Light, imagine it streaming from the Holy Light beings above and around you, to each person, place or thing you sent the Light. See the Light passing through the various energy points for persons and around and through for places and things, effectively providing the healing and rejuvenation you have requested.

Step 8. Closing – Close with,

“Heavenly Father, Holy Mother, we thank you for this Light and what it provides us and we know that this is so, and so will it always be!”



We recommend that we use this special Platinum liquid light often, and with faith and sincerity for the planet and all life that exists here. It is an important tool to be used wisely and with a pure heart.

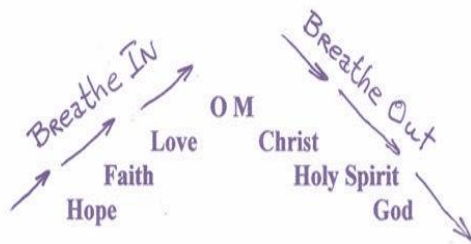
Remember to call out to those who are also available to support us and together we will raise the frequency of this planet, taking her to a whole new level as the Father/Mother God had so ordained.

THE BREATHS OF THE ELOHIM

The Two Breaths of the Elohim are truly One Breath that helps us become One with Our Creator.

1ST BREATH

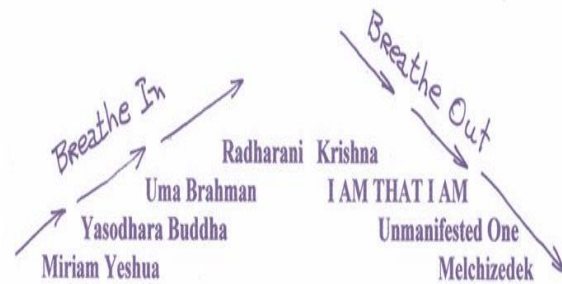
This breath of the Elohim is a very easy and gentle there is no need to breathe in a strenuous manner. As you breathe in and out say the names of the Seven Spirits Silently. In time the practice of this breath will become very relaxed and easy.



2ND BREATH

This Elohim Breath of the Godhead is an also very easy and gentle. There is no need to breathe in a strenuous manner. You will notice that the Elohim Breath of the Godhead is a little deeper than the Breath of the Elohim, the first breath. As you breathe

in and out say the names of the Seven Personalities of the Godhead Silently. In time the practice of this breath will become very relaxed and easy.



3RD BREATH

Once you have learned both breaths separately you are ready for the third breath. The third breath is a little more difficult but miraculous. It is the combining of the two breaths into one breath. Begin by breathing the 2nd breath until it is smooth and comfortable then begin to add the names of the Seven Spirits into the Elohim Breath of the Godhead.

As you say the names of:

1. Miriam /Yeshua also hear the name of Hope along with them.
2. Yasodhara/Buddha also hear the name of Faith along with them.
3. Uma/Brahman also hear the name of Love along with them.
4. Radharani/Krishna also hear the name of OM along with them.
5. I Am That I Am also hear the name of Christ along with them.

6. Unmanifested One also hear the name of the Holy Spirit along with them.
7. Melchizedek also hear the name of God along with them.

The next step is to add the names of the Elohim. Silently say one name on each beat of your heart like this:

Breathe In:

- Hope- first beat
- Faith- second beat
- Love- third beat
- Om- fourth beat
- Christ- fifth beat
- Holy Spirit- sixth beat
- God- seventh beat

Breathe Out:

- Hope- first beat
- Faith- second beat
- Love- third beat
- Om- fourth beat
- Christ- fifth beat
- Holy Spirit- sixth beat
- God- seventh beat

The use of the Elohim Breath greatly increases the flow of Ki. With a little practice it becomes quite natural to breathe in this way in hands on healing, distant healing and passing of attunements. It is

also a great breath for meditation and in ascending Ki energy and connecting with "The Highest Source." It is not about belief systems but about direct experience. Try for yourself and see.

Another step is to bring in the Kundalini Yoga influence. This is done by using the seven names with the seven chakras. Start with the base of the spine and proceed upward to the crown on the in breath and repeat this sequence from the base of the spine to the crown on the out breath. This is a gentle process that does not force the Kundalini current to open. It is a natural unfoldment.

It is highly recommended that a person working with the Elohim Breath become familiar with the teachings of the Masters.

PRAYER OF THE ELOHIM

*Our Mother and Father of Heaven Holy are
Your Names Your Kingdom come, Your
Will be done on earth as it is in Heaven
Give us this day our daily bread Forgive us
our trespasses as we forgive those who
trespass against us Lead us from
temptation and deliver us from illusion For
yours is the Kingdom, the Power and the
Glory forever,*

Amen

ATTUNEMENT PROCEDURE

The time spent in each position below is only a general guideline to give you an idea of the attunement. Use your intuition as to how long to spend in each position. This is an easy thing and just let it flow naturally. Don't let yourself concentrate on how long to stay in a position. That will distract you.

Just feel your way through it. The whole attunement takes about an hour. It can last a little longer. It is a good idea to allow another hour of time to remain in a quiet space and experience the attunement energy, shifts in consciousness, adjustments to your energy fields, etc. that may happen in this opening of the Heart and the Whole Subtle Anatomy.



1. We ask to be received into the Circle of Light. (Hands together at the heart)



2. Breathe the breath of the Elohim, palms up (or if you don't know it, just a deep even breath).



3. Visualize the White Light coming down into the Crown- Breathe the Breath of the Elohim.



4. As you open your arms up to shoulder length- visualize the rainbow forming between your hands. Breathe Here. Palms face up.



5. Turn the Palms face down- to ground the rainbow into the earth. Breathe again.



6. Brings hands back to the heart and say "Namaste" and bow to that light that dwells within us all.

“Then the LORD God formed man of dust from the ground, and breathed into his nostrils the breath of life; and man became a living being.”

~Genesis 2.7

ATTUNEMENT PROCESS

Choose a quiet place for the attunement.

The attunement process need not be memorized but can be read aloud.

The Student should be seated in a comfortable chair.

Read the Following Prayer out loud

AFFIRMATION OF THE HIGHER SELF

Unmanifested ONE,

*We ask to be channels of Your Presence
Your Guidance,*

Your Blessing, Your Anointing,

*Your Love in this healing and attunement
process,*

My sincere gratitude,

Amen.

PREPARATION

*Our One Creator, through our Faith in You,
We pray that you open and establish an
Attunement Link with us.*

Om Shanti Ohm

(Pause for the link to be established)

*Our One Creator, We thank you for
opening and establishing the Attunement
Link with us. We pray that you also
establish a permanent connection
with Students Name .*

*Our One Creator, through our Faith in You,
We pray that you give to Students Name ,
Spica Code, the First Degree Attunement of
Stellar Code at this time.*

Om Shanti Ohm

Spend some time in meditation, with your eyes closed. At this point, the three Empowerments of the Spica Attunement – Spica, Regulus, and Arcturus, will take place. In your mind's eye, visualize the Spica Symbol, or Syllable⁶, being drawn. While doing this, with your right hand, trace the Symbol in front of you. Slowly and deliberately do this three times. Visualize the Symbol becoming a Thread connecting your Heart Chakra to your Higher Self, your I AM Presence. Feel the energetic vibration being received through your Heart Chakra and radiating out through your body,

⁶ In writing, a syllable is a written representation of a sequence of sounds, or audible vibrations. In the same way, the Symbols of the Empowerments are also Syllables, as they are representative of energetic vibratory signatures.

traveling up and down your Central Channel. Take a few minutes to receive and experience the Empowerment Energy into your whole being, raising your energetic signature.

Repeat this with the Regulus Empowerment.

Repeat this with the Arcturus Empowerment.

Visualize the three Threads braiding themselves into a Strand. Feel the flow of Light and Love for you from your I AM Presence increase. Feel the Light safely filling you as water in a vessel and when you can hold no more, feel the Light gently being absorbed into every fiber of your Being.

When you are ready, open your eyes and come back to yourself. Complete the process with the following Prayer of Gratitude

Our One Creator, I acknowledge and we thank you for the full attunement and activation of Spica Code, the chord of the Stellar Code in and through my whole being.

We thank you for establishing this permanent attunement and connection with and through you.

Om Shanti Ohm

I AM grateful for your continual Presence, Guidance, Blessing, Anointing and Love in this healing and attunement process.

Our One Creator, I AM sincerely Thankful for your continual Healing, Peace,

Abundance, Joy, Love and Happiness and enlightenment in my Life.

I AM fully aware and receptive to receive the attunement offered by the Teachers of Humanity Healing at this time.

Fiat Lux,

Om Shanti Ohm

The Initiation

After the Teacher has made the initial Bridge and the Student the resultant conduit (the Empowerment) for the three energetic frequencies of the Spica Stellar Code™ and they have woven together into the Spica Strand of the Lightweaver Cord (the Attunement), the Teacher will Seal the Strand to prevent unraveling and the resultant disconnection. The Teacher does this by impressing upon the Strand the esoteric Symbols of the Star and its corresponding Angel.

The techniques and symbols for this are part of the Teaching Certification for the Stellar Codes™, which is available to all that complete the Stellar Code™ Matrix Mastery program.

Using the Symbols

The Stellar Code™ Attunements and Initiation are done through the realignment and rewiring of the basic energetic points in our subtle bodies. A syllable (Greek: συλλαβή) is a unit of organization for a sequence of speech sounds, audible vibrations of a wave frequency. The Stellar Code™ is a collection of these syllables that carry the tie between humans and the

“Music of the Spheres”⁷. They are more than a symbol; they are the pictographic representation of the Vibration of each one of the Stars.

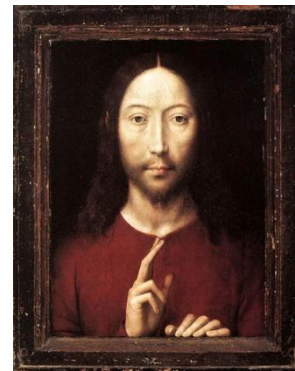


The Symbols may be drawn, calligraphy style, or visualized in their entirety, but they are most effective when traced in the air.

They are a visual representation of a Blessing, or Benediction.

When this is done, they should be traced with the

first two fingers of the right hand. This position will feel intuitively correct as it has been the hand position for Benedictions in various Faiths throughout history.



SPICA EMPOWERMENT SYMBOL

The Spica Empowerment Symbol is a Master Symbol to empower the student in Blessings and the opening of windows of opportunities to receive direct assistance from the Higher Trinity: Mother-Father-Son. This is a powerful icon because it

⁷ An ancient Greek (Pythagorean) doctrine postulating harmonious relationships among the planets governed by their proportionate speeds of revolution and their fixed distance from the earth.

brings down to the seeker the vibrational waves of creation in their most pure crystalline form. Spica anchors and allows the perfect flow of the Christ Consciousness to the energy of the Divine Feminine. It is a nurturing power, one that gives devotional and empower with assistance in every Blessings, Healing and Consecration, or cleansing-purification.

The Spica Empowerment Symbol is the foundation for the other three symbols related in this Syllabic manual.

An interesting perspective is to mentally draw the Spica Empowerment Symbol with the two fingers and gather the elements of duality in one straight line. It is the symbol of the cosmic marriage between Father Sky and Mother Earth. It is the point where the “Son” is born –Christ Consciousness.

This symbol must be used when evoking the presence of your Divine I AM Presence, in meditational practices and when you need something to be revealed to you.

SPICA-REGULUS EMPOWERMENT SYMBOL

The Spica-Regulus Empowerment serves different functions. It is a long distance symbol, and it can be used to send Harmonizing energies at great distances, through time, to situations, catastrophes, and events (past, present and future), because it amplifies the spiritual actions of the Sun Spica. This symbol can also be used as a personal healing symbol, even though its reach is more understood at collective rate. Regulus is a powerful star and its reaches encompasses of an amplifier of the actions projected by certain stellar codes.

Regulus⁸ is a Royal star related with the Host of the Archangel Michael

SPICA - ARCTURUS EMPOWERMENT SYMBOL

The Spica - Arcturus Empowerment Symbol allows you to connect those same high powers activated by the Spica symbol, bringing them down to material world and then sending them back to work be continually worked by the higher intelligences. This is also a powerful Warrior Symbol. This Empowerment is able to bring about the right energies to eliminate conflicts and to restore the element of Balance and harmony even in very conflictions situations. The Arcturus energy may take out the element of dissonance, and disharmony, but never to provoke harm or continuation of conflict or distress. Arcturus allows one to understand the reasons of the physical/emotional and spiritual distress and, at the same time, empowers the light warrior to perform a continuous Spiritual Healing and light anchoring for individuals, situations and locations even when they are absent.

The Guardians of the Stellar Codes of Arcturus are known to hold the secrets of the *Liquid Light*. The Liquid Light is known to heal, reset and restore damaged energetic connections inside the Human and Earth matrixes, repairing the elements that were

⁸ Regulus is found in the constellation Leonis, and is the 21st brightest star. Regulus in Latin means 'royalty', 'prince' or 'little king', and is the brightest star in Leo. Prior to Copernicus, who gave it its name, it was called Cor Leonis, the heart of the Lion. The Persians saw this star as the Watcher in the North and linked the star to their mythical king Feridun who once, in their mythology, ruled the entire known world.

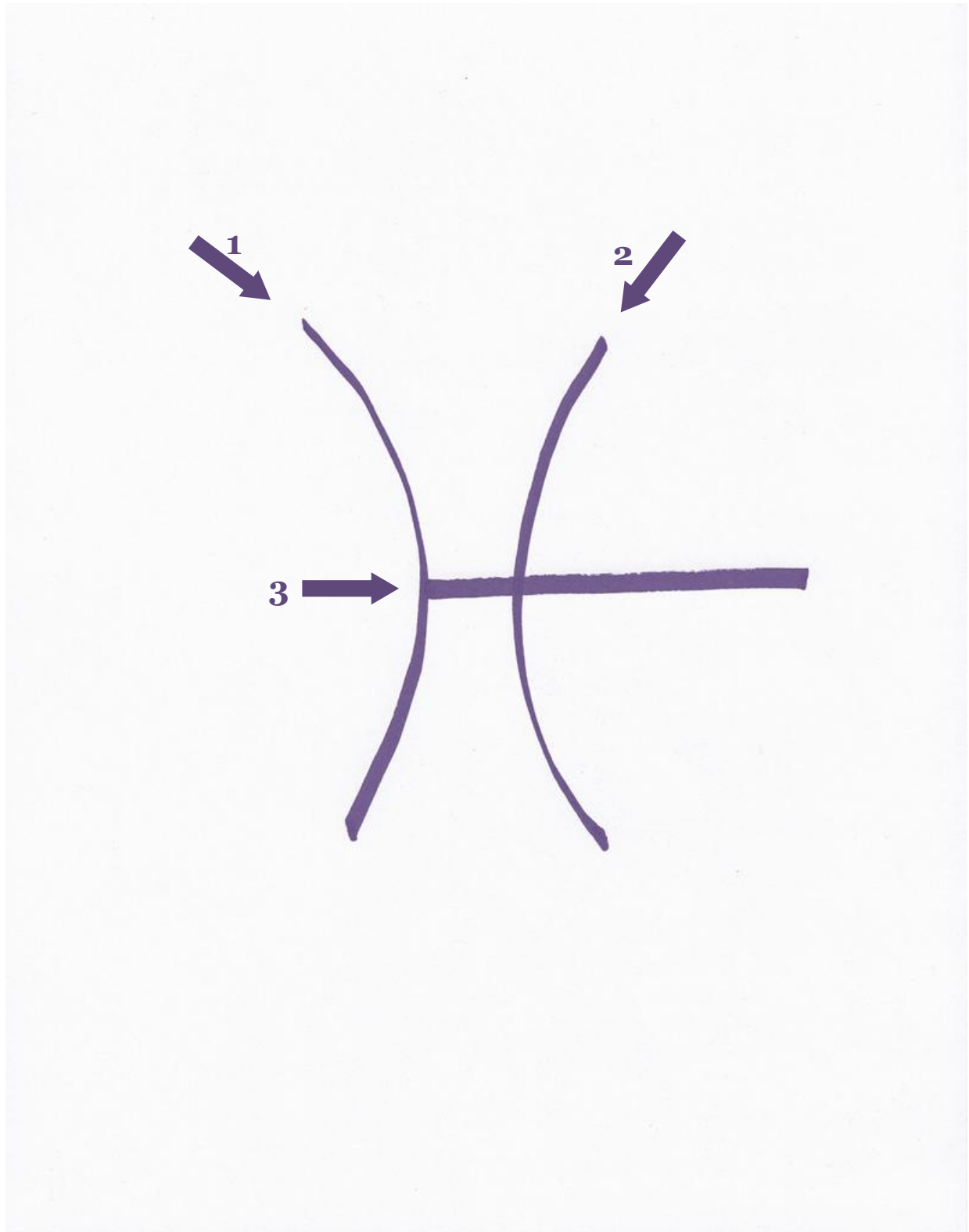
ignored and injured during the process of natural evolution. The importance of the anchoring of this symbol is one hard to be described. It is a powerful attunement because it will allow one to receive and increase the coefficient of light in one's system and improve the abilities of the soul to enact and interact with others through your personality.

HARMONIZING SYMBOL

The symbol of the harmonizer brings the possibility of inclusion of all elements of reality. The Energy of the Cosmic Mother/Earthly Mother, passive energy merges with the energy of the Father, an active one to bring to fruition the energy of manifestation. This symbol is a representation of the diverse energetic frequencies of the Universe expressed in the 3D matrix. It is a useful symbol for closing ceremonies, rituals and healing processes, as a seal, where not only cleansing power can be perceived, but the certainty that the divine will be done and the Universe will provide the sequential follow up for the action.

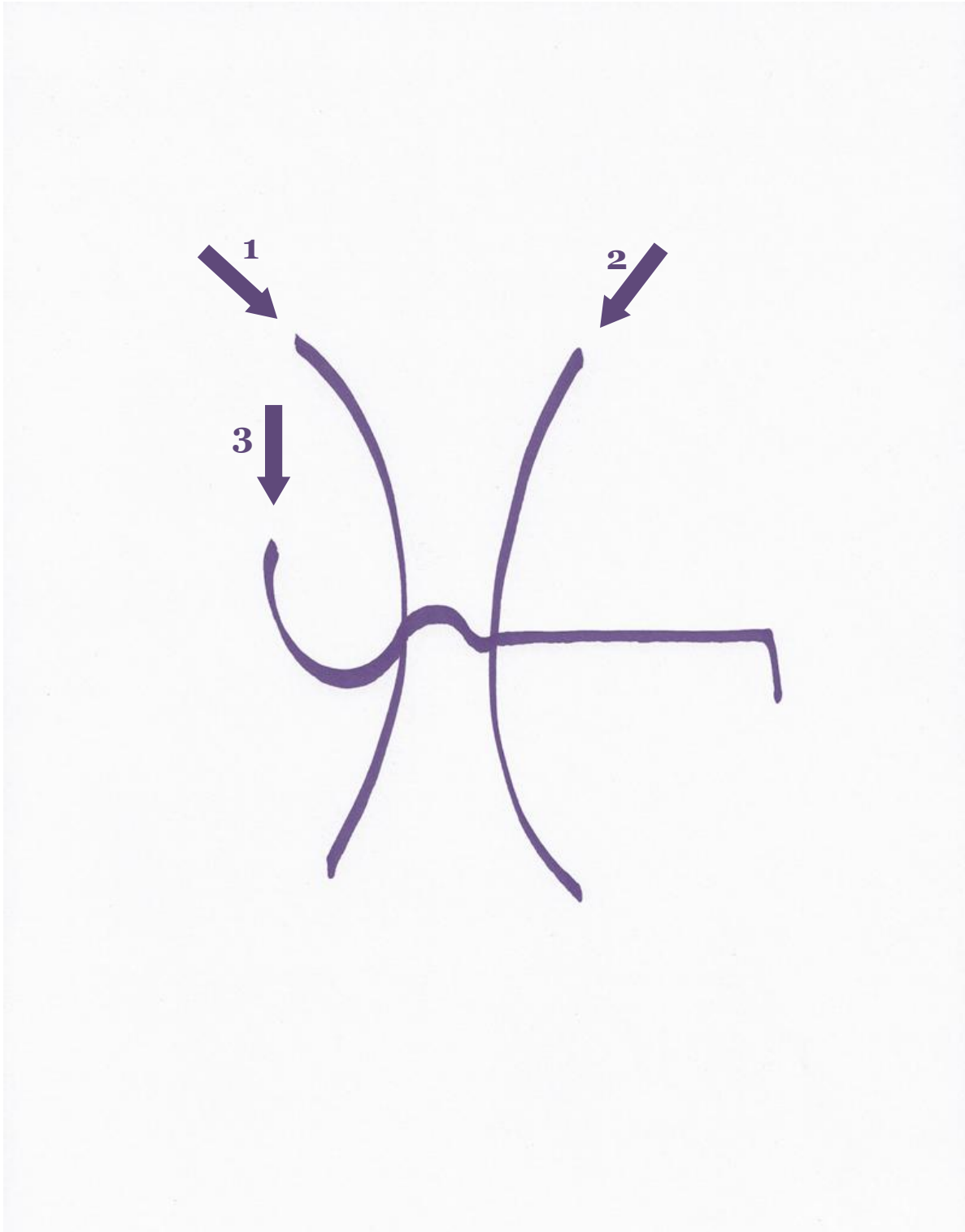


SPICA EMPOWERMENT SYMBOL



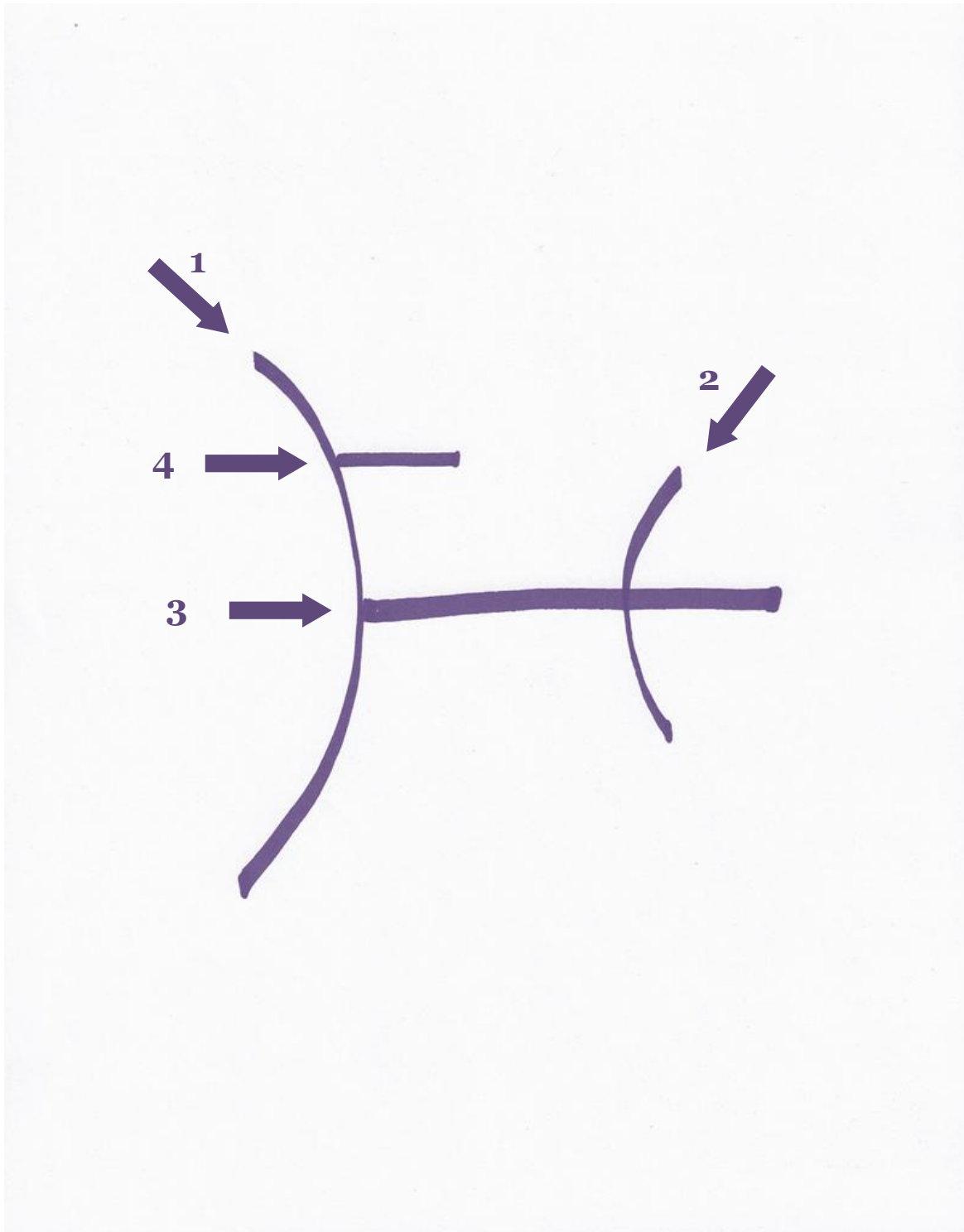


SPICA-REGULUS EMPOWERMENT SYMBOL





SPICA - ARCTURUS EMPOWERMENT SYMBOL





HARMONIZING SYMBOL

